



**REGIONAL SPECIALISED METEOROLOGICAL CENTRE-TROPICAL CYCLONES, NEW DELHI**  
**TROPICAL WEATHER OUTLOOK**

**DEMS-RSMC TROPICALCYCLONES NEW DELHI DATED 17.09.2022**

**TROPICAL WEATHER OUTLOOK FOR NORTH INDIAN OCEAN (THE BAY OF BENGAL AND ARABIAN SEA) VALID FOR NEXT 120 HOURS ISSUED AT 0600 UTC OF 17.09.2022 BASED ON 0300 UTC OF 17.09.2022.**

**BAY OF BENGAL:**

YESTERDAY'S WELL MARKED LOW PRESSURE AREA OVER CENTRAL PARTS OF UTTAR PRADESH & NEIGHBOURHOOD BECAME LESS MARKED AT 0300 UTC OF TODAY, THE 17<sup>TH</sup> SEPTEMBER 2022.

A CYCLONIC CIRCULATION LIES OVER EASTCENTRAL & ADJOINING SOUTHEAST BAY OF BENGAL BETWEEN 4.5 & 5.6 KM ABOVE MEAN SEA LEVEL. UNDER ITS INFLUENCE, A LOW PRESSURE AREA IS LIKELY TO FORM OVER WESTCENTRAL & ADJOINING NORTHWEST BAY OF BENGAL AROUND 20<sup>TH</sup> SEPTEMBER, 2022.

SCATTERED TO BROKEN LOW AND MEDIUM CLOUDS WITH EMBEDDED INTENSE TO VERY INTENSE CONVECTION OVER CENTRAL ADJOINING SOUTH BAY OF BENGAL. SCATTERED LOW AND MEDIUM CLOUDS WITH EMBEDDED MODERATE TO INTENSE CONVECTION OVER NORTH BAY OF BENGAL, NORTH ANDAMAN SEA AND GULF OF MARTABAN.

**PROBABILITY OF CYCLOGENESIS (FORMATION OF DEPRESSION) DURING NEXT 120 HRS:**

24 HOURS	24-48 HOURS	48-72 HOURS	72-96 HOURS	96-120 HOURS
NIL	NIL	NIL	NIL	NIL

**ARABIAN SEA:**

SCATTERED LOW AND MEDIUM CLOUDS WITH EMBEDDED MODERATE TO INTENSE CONVECTION OVER CENTRAL AND ADJOINING SOUTH ARABIAN SEA.

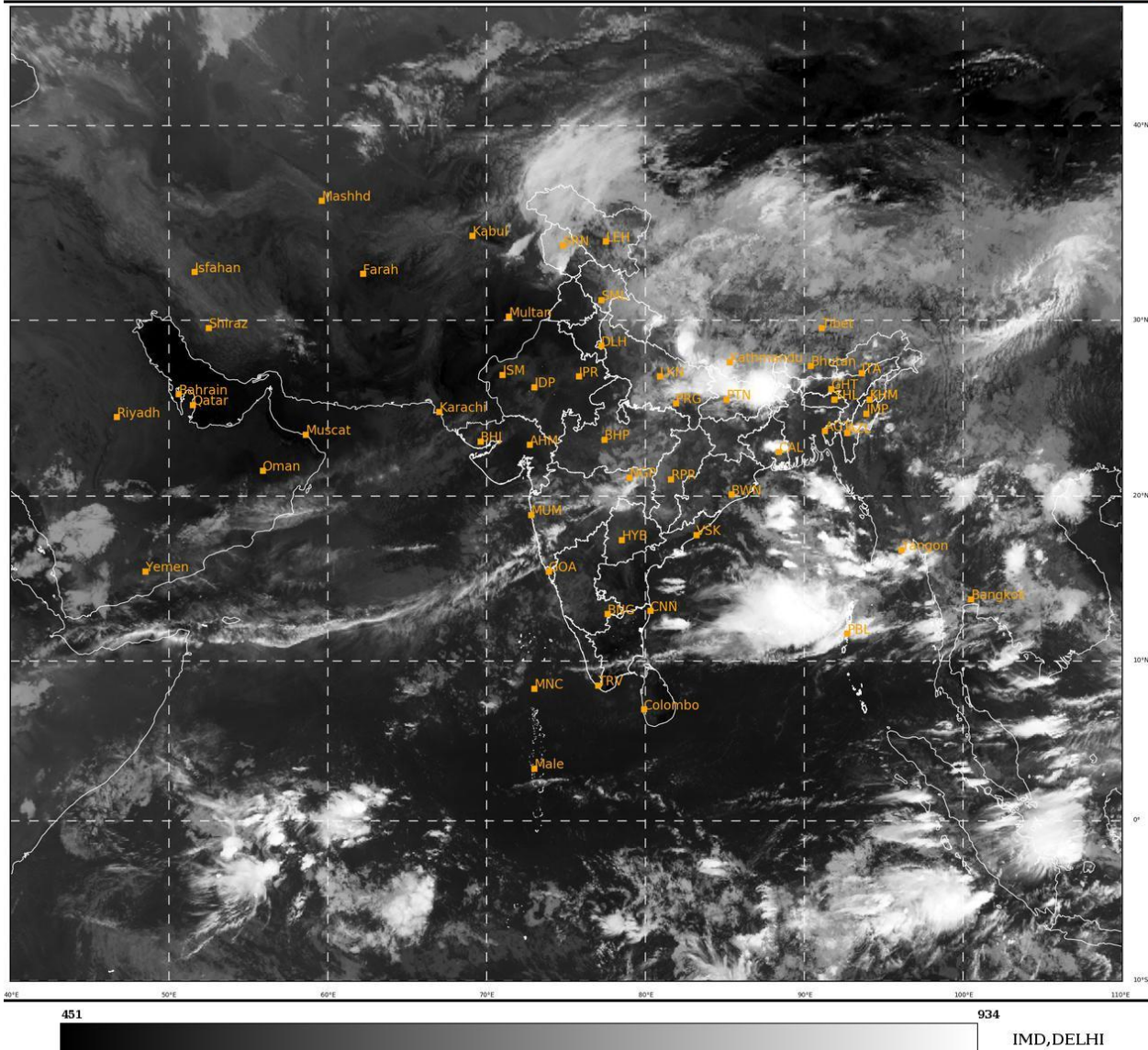
**PROBABILITY OF CYCLOGENESIS (FORMATION OF DEPRESSION) DURING NEXT 120 HRS:**

24 HOURS	24-48 HOURS	48-72 HOURS	72-96 HOURS	96-120 HOURS
NIL	NIL	NIL	NIL	NIL

**Remarks:** NIL

SAT : INSAT-3D IMG  
 IMG\_TIR1 10.8 um  
 L1C Mercator

17-09-2022/(0300 to 0327) GMT  
 17-09-2022/(0830 to 0857) IST



Cloud distribution: (a) Isolated: <25%, Scattered:25-50%, Broken: 51-75%, Solid:>75%, Convection Intensity: (a) Weak: Cloud Top Temperature (CTT) >-25°C, (b) Moderate: CTT: - 25°C to -40°C, (c) Intense: CTT: - 41°C to -70°C and (d) Very Intense: : Less than -70°C  
 PROBABILITY OF CYCLOGENESIS (FORMATION OF DEPRESSION):NIL: 0%, LOW: 1-33%, , MODERATE: 34-66% AND HIGH: 67-100%  
 This is a guidance Bulletin for WMO/ESCAP Panel Member countries. Visit respective National websites for Country specific Bulletins